

# BUSHFIRE EMERGENCY RESPONSE PLAN

## 8 CAPE VIEW LANE, PEPPERMINT GROVE BEACH

### FACILITY DETAILS

Facility	Holiday home (un-hosted)	
Address	8 Cape View Lane, Peppermint Grove Beach	
Guests	Maximum 10	
Management	Seaside Homes	9285 2100
	Lorena Sumich	0458 489 972

### THE NOMINATED GUEST IS THE CHIEF WARDEN FOR THE FACILITY

### CHIEF WARDEN'S ROLE:

- Remain informed of DFES Emergency Warnings by monitoring public information sources (listed below)
- Determine when to evacuate
- Vehicle Management: The Chief Warden must ensure guests are evacuated by private vehicle.
- Oversee Emergency Evacuation and the safety of guests
- Maintain contact with the Manager

### ALERTS and MONITORING SOURCES

Emergency WA	www.emergency.wa.gov.au
Weather - FDR	www.bom.gov.au/wa
Local ABC radio	684
Emergency contacts	
DFES	13 33 37
Police/Ambulance /Fire	000

### EMERGENCY EQUIPMENT

**Fire Extinguisher** A chemical fire extinguisher is located in the kitchen pantry



### MONITORING

Throughout the bushfire season from October to April

- After 5pm each day check forecast conditions for the following day

<http://www.bom.gov.au/wa/forecasts/fire-danger-ratings.shtml>

### On days forecast as High fire risk (or above)

- Periodically check the EmergencyWA website
- Leave mobile phones turned on and accessible to receive SMS public warnings
- Leave mobile phones turned on and accessible to receive communication from the property manager

### FIRE RISK FORECAST

A fire danger rating (FDR) of Extreme 75+ or Catastrophic means a fire will be fast moving, intense, and uncontrollable.

On days forecast as Extreme 75+ or Catastrophic guests should confine their activities to the holiday home, coast or township and avoid travelling inland.



### BUSHFIRE EMERGENCY

If a Fire is observed nearby or embers and ash, or smoke, is affecting the holiday home: or

You have been directed to evacuate from an emergency service authority

### EVACUATE

Evacuate by private vehicle to **Peppermint Grove Beach Community Centre**

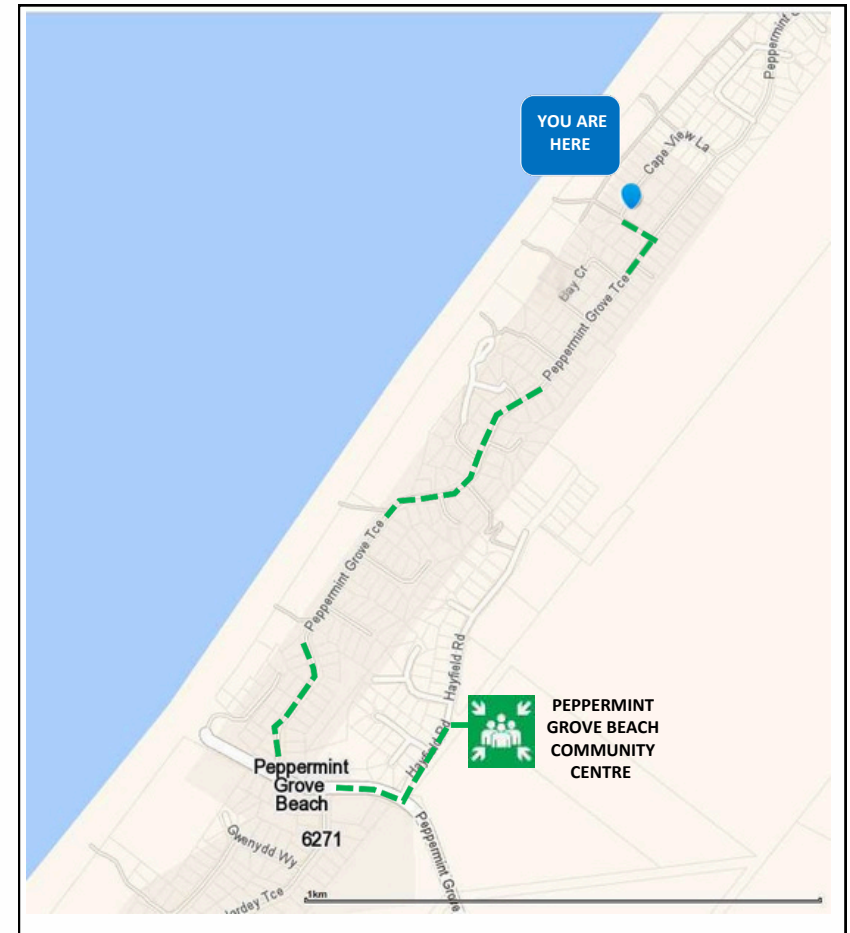
### COMMUNICATE

The Chief Warden will maintain communication with all members of their party to confirm their safety.

The Chief Warden will maintain communication with the manager to confirm if and when it will be safe to return to the site, or if guests should return to their homes.

### ALL CLEAR

If the facility has been evacuated, and DFES have advised it is safe to return, the **Chief Warden** will await confirmation from the **Manager** before instructing guests they can return to the accommodation.



**Peppermint Grove Beach Community Centre** Hayfield Dr, Peppermint Grove Beach

### Route description - 2.0 km

From Cape View Lane turn right onto Peppermint Grove Terrace to Peppermint Grove Road, travel 1.3 km, turn left onto Peppermint Grove Road, travel 240 m, and turn left again onto Hayfield Drive, then travel 250 m; the Community Centre is on your right .

**If the Peppermint Grove Beach Community Centre is not opened, stay within the township of Peppermint Grove Beach and await the advice of the Property Manager to confirm it is safe to return to the holiday home or follow other arrangements from the Manager as advised**

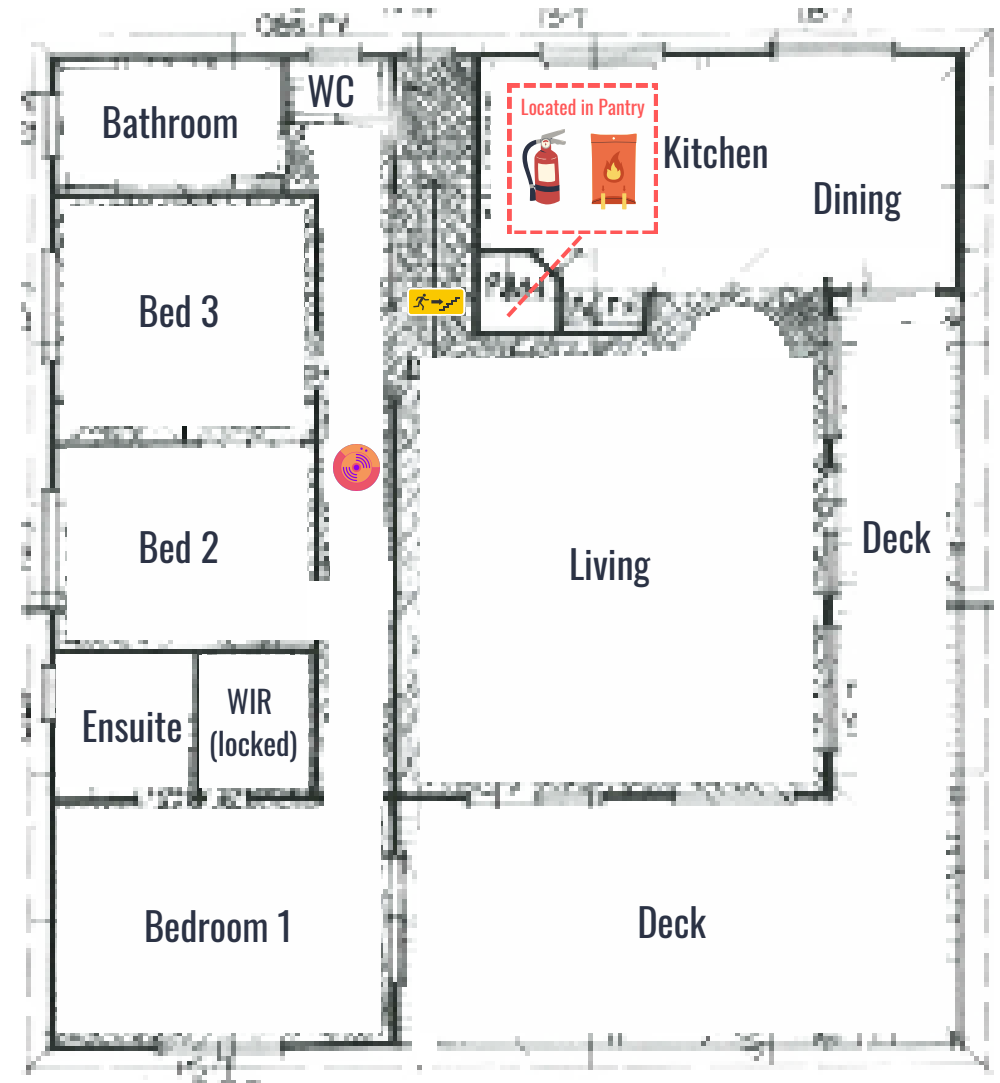
# PROPERTY EMERGENCY EVACUATION PLAN

8 CAPE VIEW LANE, PEPPERMINT GROVE BEACH

## GROUND FLOOR



## FIRST FLOOR



**KEY**



Your are here



Exit



Stairs



Smoke Alarm



Fire Extinguisher



Fire Blanket



Garden Hose



Outdoor Shower